

With the benefit of more than 20 years of experience in creating innovative Facilities Management software, Asckey now bring you fmfirst® estates and facilities.

This module forms a key part of the fmfirst® product suite and offers a proven methodology for the day-to-day management of all aspects of Estates Management.

User approved systems

fmfirst® estates and facilities has been developed with the active input of experienced Facilities Managers and builds upon experience gathered through close user consultation.

System functionality supports current CQC guidelines in relation to the safety and suitability of premises. Simplified windows based functionality provides Facilities Managers with a system that works in support of process compliance and quality assurance.

Traceability is key

The built in audit trail allows you to track by who, when and how a task was completed - essential for long-term peace of mind. Define, allocate and track all scheduled and ad-hoc tasks with a combined estates and facilities package.

fmfirst® estates and facilities enables effective site wide operations management including:

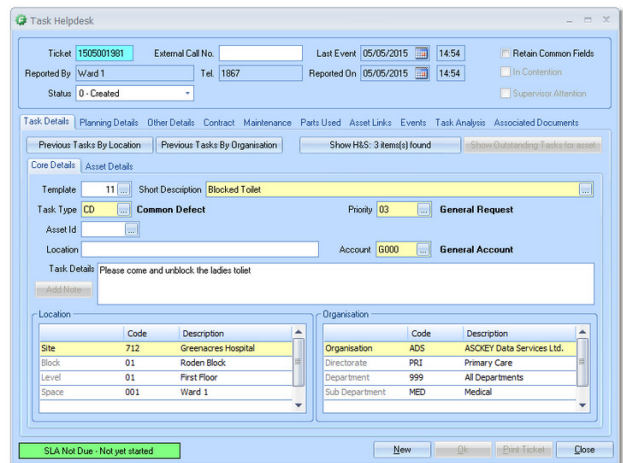
- Full site control with Task definition and allocation including PPM
- Task Management including Helpdesk
- Asset management and maintenance for CQC compliance
- Terrier type information on all properties
- Financial control and flexible reporting
- Data management for interactive, meaningful MI
- Staff management including training, sickness and absence management
- Mobile functionality/PDAs for full cross-site control and remote user accountability
- Automatic integration with fmfirst cleaning

fmfirst® estates and facilities truly reflects the needs and realities of estates and facilities managers.

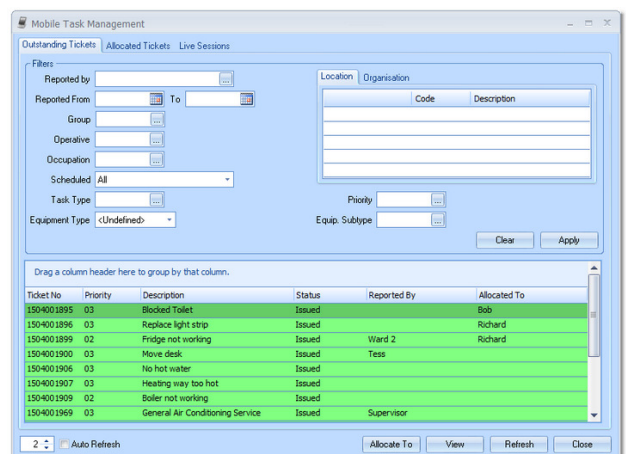
Quality

The development of fmfirst® estates and facilities conforms to the latest ISO9001:2008 standards. If your FM first estates installation is hosted with Asckey, the security of your data conforms to ISO27001:2013.

These standards ensure that all current and future versions meet stringent quality control procedures, providing system reliability and essential business continuity.



Help Desk



Mobile Task Management



fmfirst® estates and facilities	fmfirst® for
Planned maintenance	<ul style="list-style-type: none"> • Preformatted task templates for simplified maintenance process • Reduced PPM task administration time with multi-frequency tasks • Single view task status for SLA priority monitoring • Weekly/annual planners with colour coded, 'drag and drop' functionality aid PPM task planning • SFG20 integration, PPM pre-population with core and HTM schedules
Asset management	<ul style="list-style-type: none"> • Clearly visible asset tracking for loaned assets by location • Consistent, reliable asset servicing and repair with automated task creation for individual equipment categories/model types • Robust asset data register for all essential assets and related costs
Mobile task management	<ul style="list-style-type: none"> • Increased efficiency of remote mobile workforces with remote worker task log off including an 'electronic signature' • Live task updates with instant, complete task details at any location includes task element sign off • Synchronised task updates to central fmfirst® system
Help Desk	<ul style="list-style-type: none"> • Fast and accurate task creation for increased efficiency • User definable priorities to assist in faster task scheduling • Multiple work elements with single or multiple staff assigned
Property management	<ul style="list-style-type: none"> • Property management overview with combined, centralised data • Centrally managed terrier-type information such as rights, restrictions, property values, regulatory or legal changes
Finance and purchasing	<ul style="list-style-type: none"> • Real-time reporting and analysis for effective financial management • Greater cost efficiencies with combined purchase orders/stock control linked to cost and budget centres • Task specific stock and purchasing data
Project management	<ul style="list-style-type: none"> • Improved productivity with linked budget and cost centres • Improved communication links with key stakeholders and contractors • Multiple project cost control with links to purchase orders management for single or multiple projects
Staff management	<ul style="list-style-type: none"> • Service continuity with leave and sickness planning tools • Staff suitability checks for appropriate qualification/ training/competency
System security	<ul style="list-style-type: none"> • Close targeting of individual users to specific types of work tailored to an individual's area of responsibility • Reduced data entry errors in key areas such as financial control • Improved workflow efficiency with allocated staff authorisers
Document management	<ul style="list-style-type: none"> • Clearly listed associated documents related to specific task or asset • Fast simple document access at any location to view or edit via Windows or the Web • High visibility of essential task specific documents with automated document printing as tickets are raised
Reporting	<ul style="list-style-type: none"> • Browser based dynamic and interactive management reporting with dashboard presentation of KPI's • Integrated data exchange with document management systems

Intuitive – Flexible – Innovative – Targeted – Secure

tel. 0845 270 7747 www.fmfirst.co.uk enquiries@asckey.com

fmfirst® estates and facilities Copyright© Asckey Data Services Ltd. All Rights Reserved.

